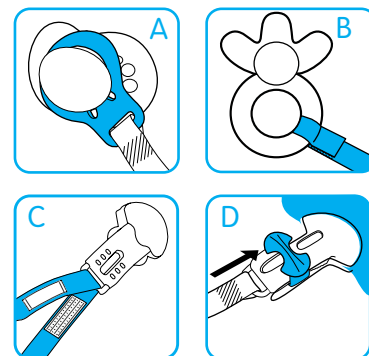


- When used with a MAM or other button pacifier, press the transparent ring over the button of the pacifier (Diagram A).
- The flexible loop on the MAM clip securely holds not only pacifiers but also teething toys, small toys and much more. (Diagram B)
- For the Fashion Clip, change the leash by opening the fastener and detaching the leash from the bottom of the clip. Attach the new leash by inserting it in the loop at the bottom of the clip and close the fastener. (Diagram C)
- The clip fastener is opened by moving the slider towards the leash and closed by clicking the slider towards the rounded end. (Diagram D)
- The pacifier clip should only be attached to garments.
- The clip fastener should always be stored and cleaned in the open position to avoid the clip spring losing its strength. Do not store in the closed position.
- Regularly clean the clip and ring with warm water and mild cleaning agent. Rinse thoroughly. **DO NOT BOIL**, steam or microwave sterilize.
- Do not use solvents or abrasive cleaning agents as these could damage the product.



▲ WARNING- For your child's safety and health!

- Before each use check carefully. Throw away at the first sign of damage or weakness.
- Never lengthen the pacifier holder!
- Never attach to cords, ribbons, laces or loose parts of clothing. The child may be strangled.
- The use of a pacifier clip when baby is sleeping or in bed, crib or cot is not recommended.
- Ensure both ends of the pacifier clip are fastened before leaving your child unattended.
- The pacifier clip should not be used as a teether or toy.